



Robert Reid Wedding Architects & Planners, AIA, Inc.
 4112 West Cypress Street, Tampa, Florida 33607 (813) 879-6996
 612 S. Military Trail, Deerfield Beach, Florida 33442 (954) 492-9980
 State of Florida BPR License #: Architecture/Interior Design: AA-C001123

ADDENDUM NO. 03
 PROJECT NO. 16-064

Reference Bid Documents issued for IFB 17-004

Rise Jordan Park Apartments, LLC

HVAC Replacement project
 Jordan Park Apartments
 St. Petersburg, Florida 33703

Date: March 21, 2017

General:

This addendum shall modify or clarify certain items as indicated in the request for proposal for **Rise Jordan Park Apartments, LLC - HVAC Replacement** project, plans dated 12-07-16.

Information contained within this addendum shall take precedence over items which may conflict with the plans and specifications. This document shall be considered a part of the contract documents for the above-mentioned project.

1. Reference: Bid Documents, **pages 76, 76, and 78 (HVAC Diagrams), clouded and annotated copies attached:**

Replace Diagrams revised in Addendum #001 dated 3-14-17, with attached revised, clouded diagrams.

Clarifications per RFI rec'v'd 03-20-17 via email:

1. Delete Drywells shown on diagrams from scope of work.
 Drywells NOT required for either individual apartments OR for the community center HVAC installation. Condensate to drain onto grade/grass typical throughout development.
2. Scope of work does NOT include trenching & replacing slabs for new condensate lines to be installed below grade. A condensate pump is req'd for each apartment.
3. Per SPHA (Owner) – shark bites are NOT acceptable. Replace hydronic feed connection to existing heat pump units between ball valves w/standard welded new piping.
4. In some locations the refrigerant sleeve is installed directly below existing AHU in center of closet, which would prevent placing the overflow pan on floor below unit. In these instances contractor to provide simple framed platform for overflow pan so that sleeve may be re-used.

(End)

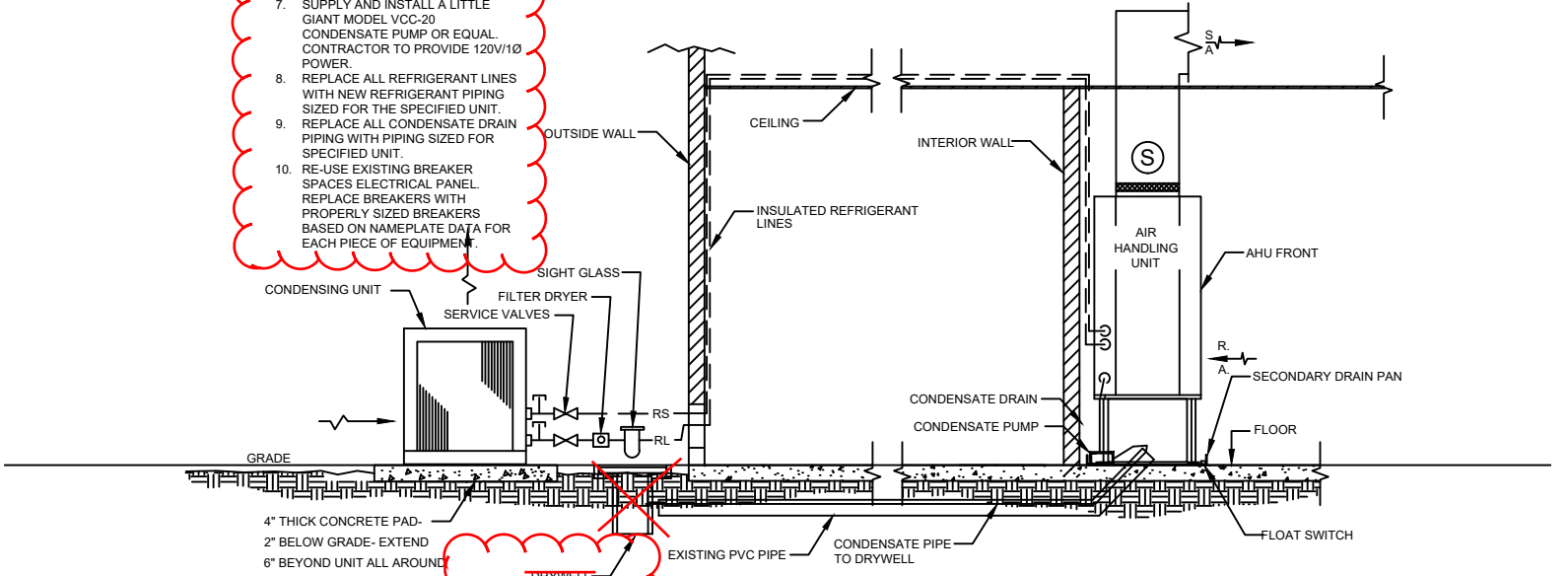
Contractor To Acknowledge Receipt Of Addenda.

.....
 By: Susan Bradley
 Project Manager,
 Robert Reid Wedding Architects & Planners, AIA, Inc.
 4112 Cypress St
 Tampa, FL 33607
 Phone: 813.879.6996 ext. 233
 Fax: 813.871.5203
 Email: susan.bradley@rrw-architects.com

INSTALLATION NOTES:

1. SECONDARY DRAIN PAN TO BE SS, GALVANIZED, ALUMINUM OR PLASTIC.
2. SECONDARY DRAIN PAN TO BE 2" WIDER ON ALL SIDES THAN AHU.
3. ~~ADD TRAP ON CONDENSATE DRAIN IF CONDENSATE PUMP IS NOT USED.~~
4. AHU TO BE MOUNTED ON STEEL FRAME APPROX. 18" AFF.
5. FLOAT SWITCH IN SECONDARY DRAIN PAN TO SHUT AHU DOWN.
6. RETURN AIR TO FACE FRONT ON UNIT, NOT SIDE OR BOTTOM.
7. SUPPLY AND INSTALL A LITTLE GIANT MODEL VCC-20 CONDENSATE PUMP OR EQUAL. CONTRACTOR TO PROVIDE 120V/10 AMPERES.
8. REPLACE ALL REFRIGERANT LINES WITH NEW REFRIGERANT PIPING SIZED FOR THE SPECIFIED UNIT.
9. REPLACE ALL CONDENSATE DRAIN PIPING WITH PIPING SIZED FOR SPECIFIED UNIT.
10. RE-USE EXISTING BREAKER SPACES ELECTRICAL PANEL. REPLACE BREAKERS WITH PROPERLY SIZED BREAKERS BASED ON NAMEPLATE DATA FOR EACH PIECE OF EQUIPMENT.

ADDENDUM #1



ADD. #003

A/C SYSTEM DETAIL WITH VERTICAL AIR HANDLING UNIT & CONDENSING UNIT MOUNTED AT GRADE
NOT TO SCALE

(3)

RISE JORDAN PARK APARTMENTS, LLC

JORDAN PARK RENOVATION
Robert Reid Wedding Architects & Planners, AIA, Inc.

1115 Cypress Street, Tampa, Florida 33607 813.973.6406
401 South Alafia Avenue, Tampa, Florida 33642 813.973.6406
Florida License #: Architectural Interior Design: AA-C001123

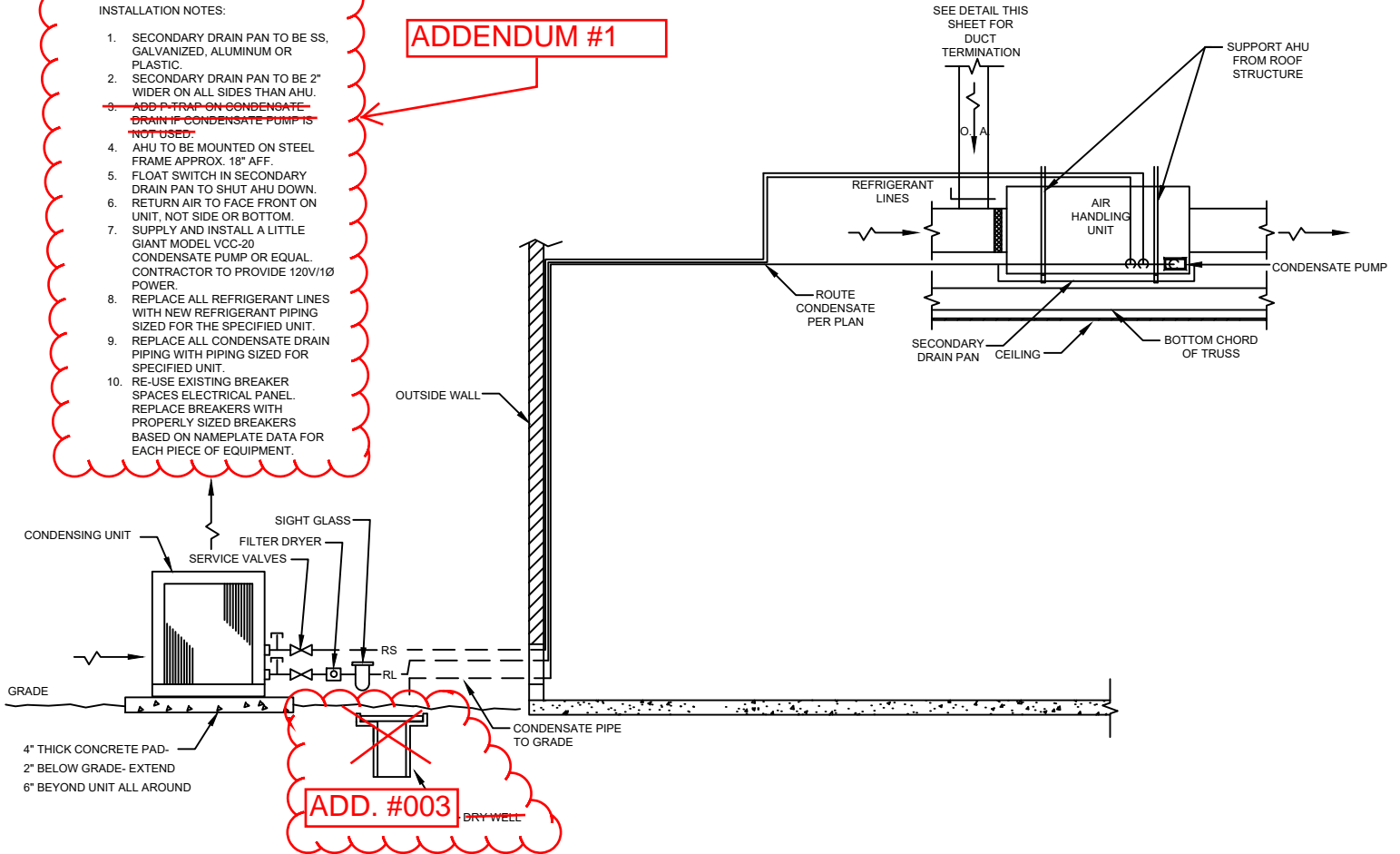
16-064

Michael Ayers, P.E.
FL No. 55319

INSTALLATION NOTES:

1. SECONDARY DRAIN PAN TO BE SS, GALVANIZED, ALUMINUM OR PLASTIC
2. SECONDARY DRAIN PAN TO BE 2" WIDER ON ALL SIDES THAN AHU.
3. ~~ADD P-TRAP ON CONDENSATE DRAIN IF CONDENSATE PUMP IS NOT USED.~~
4. AHU TO BE MOUNTED ON STEEL FRAME APPROX. 18" AFF.
5. FLOAT SWITCH IN SECONDARY DRAIN PAN TO SHUT AHU DOWN.
6. RETURN AIR TO FACE FRONT ON UNIT, NOT SIDE OR BOTTOM.
7. SUPPLY AND INSTALL A LITTLE GIANT MODEL VCC-20 CONDENSATE PUMP OR EQUAL. CONTRACTOR TO PROVIDE 120V/1Ø POWER.
8. REPLACE ALL REFRIGERANT LINES WITH NEW REFRIGERANT PIPING SIZED FOR THE SPECIFIED UNIT.
9. REPLACE ALL CONDENSATE DRAIN PIPING WITH PIPING SIZED FOR SPECIFIED UNIT.
10. RE-USE EXISTING BREAKER SPACES ELECTRICAL PANEL. REPLACE BREAKERS WITH PROPERLY SIZED BREAKERS BASED ON NAMEPLATE DATA FOR EACH PIECE OF EQUIPMENT.

ADDENDUM #1



A/C SYSTEM DETAIL WITH HORIZONTAL AIR HANDLING UNIT & CONDENSING UNIT MOUNTED AT GRADE
 NOT TO SCALE



**Robert Reid Wedding
Architects & Planners, AIA, Inc.**

1115 Cypress Street, Tampa, Florida 33606 813.973.6406
612 South Bay Street, Orlando 32842 407.429.8361
Florida License #: Architect/Interior Design: AA-C001123

JORDAN PARK RENOVATION

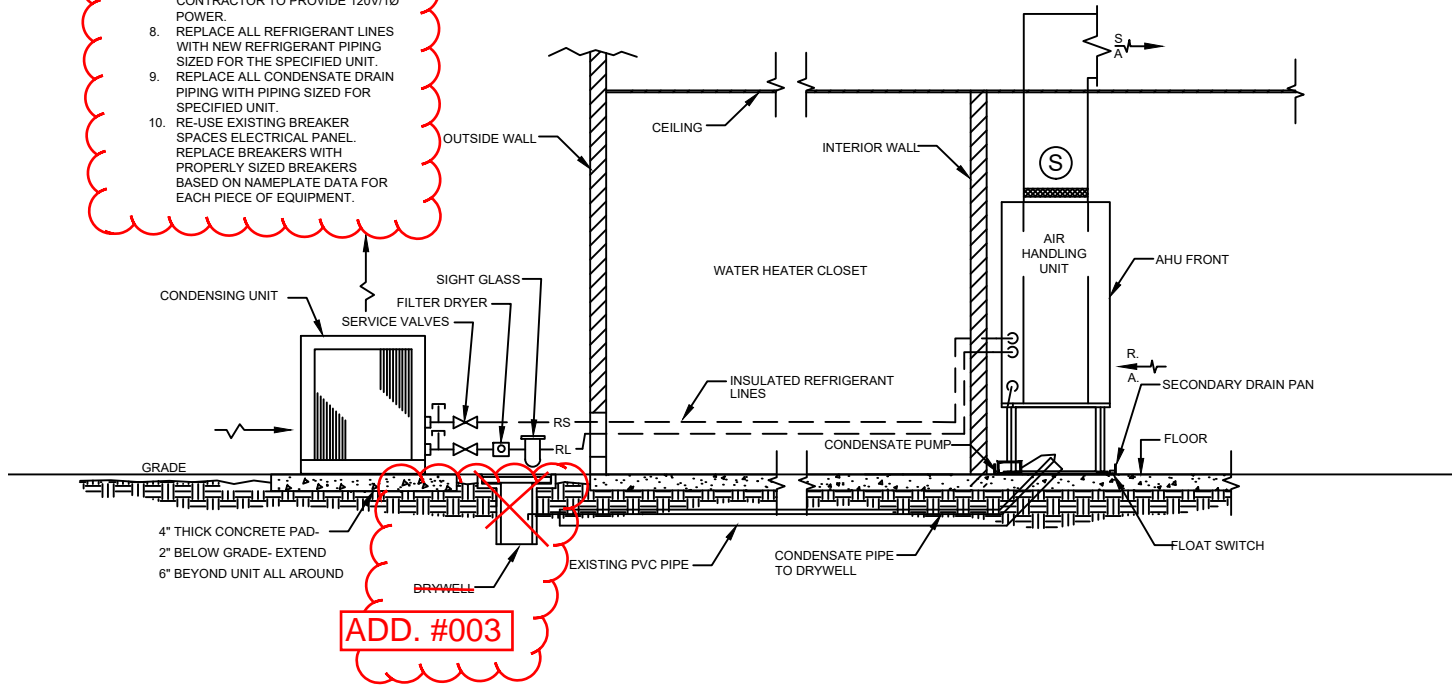
RISE JORDAN PARK APARTMENTS, LLC

16-064

INSTALLATION NOTES:

1. SECONDARY DRAIN PAN TO BE SS, GALVANIZED, ALUMINUM OR PLASTIC.
2. SECONDARY DRAIN PAN TO BE 2" WIDER ON ALL SIDES THAN AHU.
- ~~3. ADD TRAP ON CONDENSATE DRAIN IF CONDENSATE PUMP IS NOT USED.~~
4. AHU TO BE MOUNTED ON STEEL FRAME APPROX. 18" AFF.
5. FLOAT SWITCH IN SECONDARY DRAIN PAN TO SHUT AHU DOWN.
6. RETURN AIR TO FACE FRONT ON UNIT, NOT SIDE OR BOTTOM.
7. SUPPLY AND INSTALL A LITTLE GIANT MODEL VCC-20 CONDENSATE PUMP OR EQUAL. CONTRACTOR TO PROVIDE 120V/1Ø POWER.
8. REPLACE ALL REFRIGERANT LINES WITH NEW REFRIGERANT PIPING SIZED FOR THE SPECIFIED UNIT.
9. REPLACE ALL CONDENSATE DRAIN PIPING WITH PIPING SIZED FOR SPECIFIED UNIT.
10. RE-USE EXISTING BREAKER SPACES ELECTRICAL PANEL. REPLACE BREAKERS WITH PROPERLY SIZED BREAKERS BASED ON NAMEPLATE DATA FOR EACH PIECE OF EQUIPMENT.

ADDENDUM #1



ADD. #003

**A/C SYSTEM DETAIL WITH VERTICAL AIR
HANDLING UNIT & CONDENSING UNIT
MOUNTED AT GRADE**
NOT TO SCALE

(4)